

## 6 Information Labels, Plates and Serial Numbers

A unique Vehicle Identification Number (VIN) identifies the complete vehicle. This number is stamped or attached to the vehicle body at the locations shown below. Major mechanical components also have serial numbers and / or identification labels in various locations. It is essential that when compiling warranty claims or product and field reports, that the Vehicle Identification Number (VIN) is quoted in conjunction with the identification data of the component affected.

### NOTE

For tyre placard information, refer to [Section 10 Wheels and Tyres](#). For HVAC label information, refer to [Section 2A HVAC Climate Control \(Manual A/C\)](#).

### 6.1 Body Locations

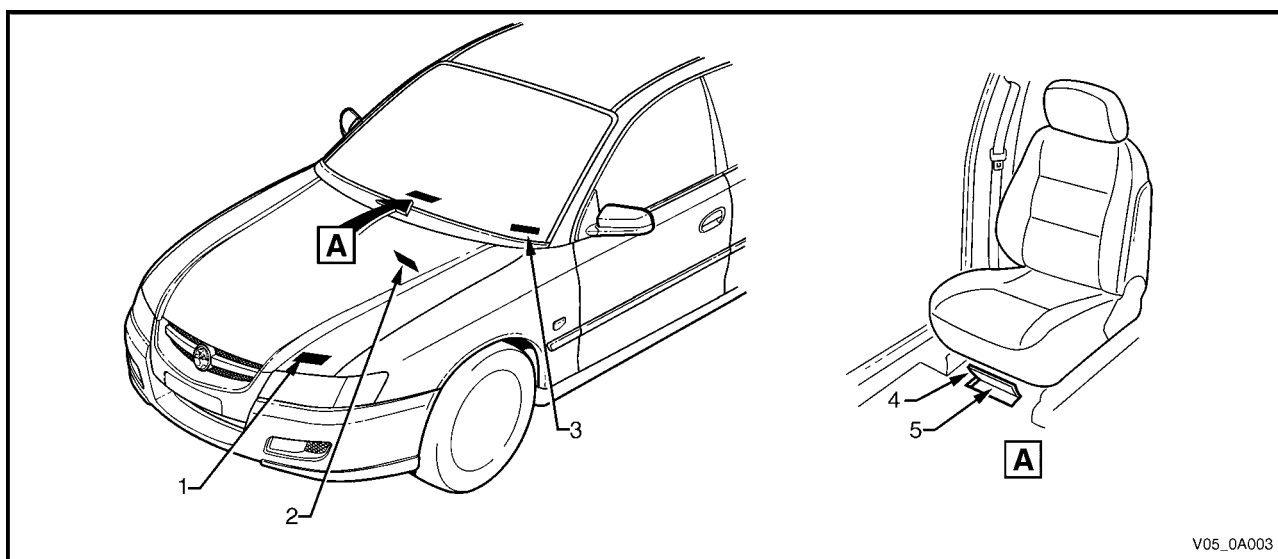


Figure 0A – 4

### Legend

- |   |  |   |  |
|---|--|---|--|
| 1 | Body and Option Identification plate – Left-hand side of the Front Panel Upper | 4 | Carpet flap  |
| 2 | Safety Compliance plate – Dash Panel Assembly                                  | 5 | Vehicle Identification Number (VIN) – Under front seat carpet flap |
| 3 | Vehicle Identification Number (VIN) plate – Under the Windscreen               |   |  |

## 6.2 Safety Compliance Plate

The safety compliance plate is located on the dash panel assembly within the engine compartment.

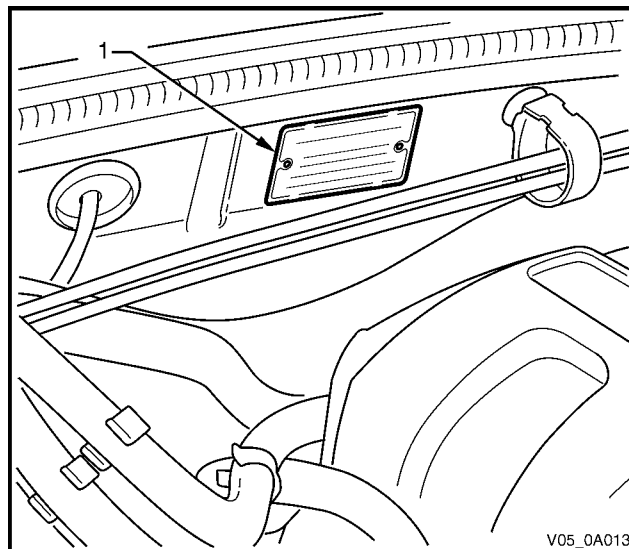


Figure 0A – 5

The safety compliance plate is stamped with the following information:

- Compliance plate approval number.
- Vehicle category code.
- Name appearing on compliance plate approval.
- Make / Model.
- Gross Vehicle Mass (GVM). This is the maximum loaded mass at which the vehicle complies with the approved design rules. Not required for passenger vehicles (required for utility, regular cab and crew cab vehicles).
- Seating capacity: The number of adult positions for which seat belts are provided.
- Date of manufacture: The day, month and year that the vehicle is manufactured.
- Vehicle Identification Number (VIN).

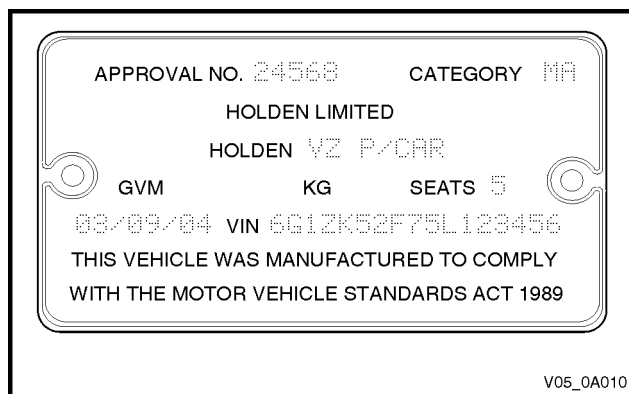


Figure 0A – 6

## 6.3 Body and Option Identification Plate

The Body and Option Identification Plate (1) is located on the front panel assembly and is stamped with the following information:

### Model

Combination of letters and numbers identifying the body style, the mechanical pack and smart pack options.

A listing of production and smart pack option numbers can be found by referring to the latest spare parts information for the applicable model.

### Body No

Vehicle Identification Number (VIN).

### Trim

Trim combination.

### Paint

Exterior paint material and colour identification.

### Built

The date of manufacture by calendar month and year in which the body shell and power train are conjoined and the vehicle is driven or moved from the production line.

### Susp

Suspension option code identification.

STD (FE1) identifies vehicles with standard suspension.

FE2 identifies vehicles with sport suspension.

FR1 identifies vehicles with country pack suspension.

### Engine, Transmission and Axle.

Identification option codes for specific engine, transmission and rear axle (final drive).

### A/C

C60 identifies vehicles fitted with air conditioning.

C61 Identifies vehicles fitted with single zone automatic climate control air conditioning.

CJ2 identifies vehicles fitted with dual zone automatic climate control air conditioning.

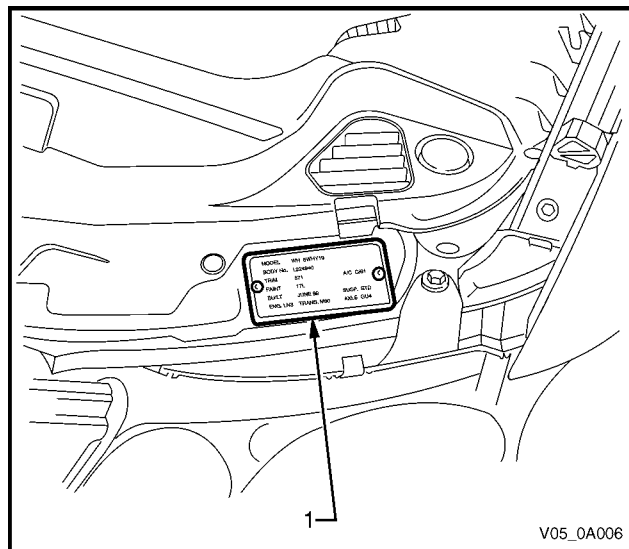


Figure 0A – 7

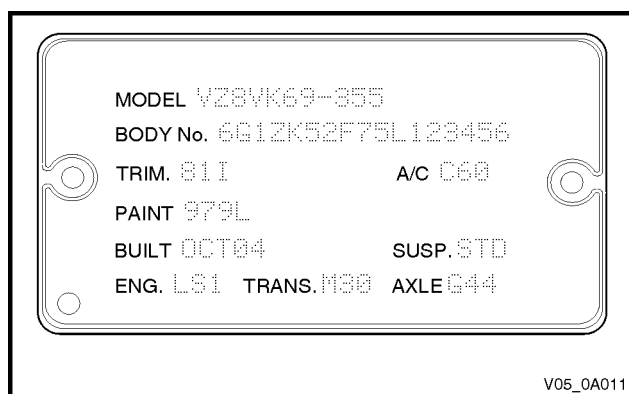


Figure 0A – 8

## 6.4 Vehicle Identification Number

The Vehicle Identification Numbering (VIN) system is based on the uniform Car Model Designation System. This identifies the vehicle in one coded series of characters.

The Vehicle Identification Number is positioned in the following locations.

- 1 VIN plate under the windscreen – viewed through the windscreen aperture.
- 2 Body and option identification plate – left-hand side of the front panel upper.
- 3 Safety compliance plate – dash panel.
- 4 Stamping in the front floor panel under the front right-hand seat.

### VIN Plate

The VIN Plate (1) is located under the windscreen and is viewed through the windscreen aperture.

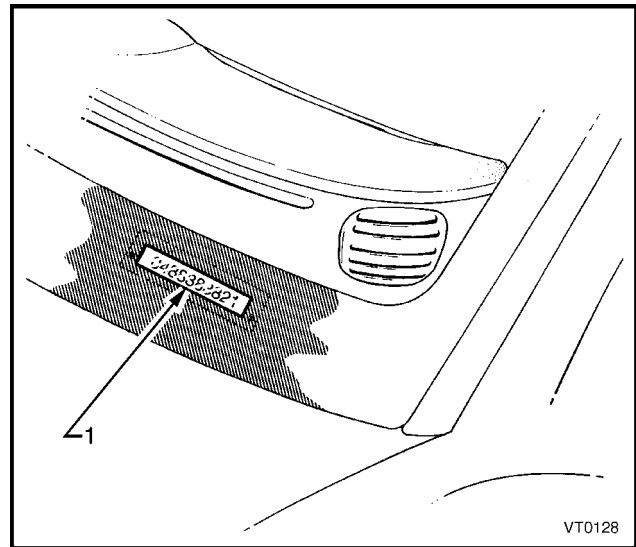


Figure 0A – 9

Figure 0A-10 shows the VIN plate (1) that is located under the windscreen aperture and is attached to the dash panel assembly with unique rosette headed rivets.

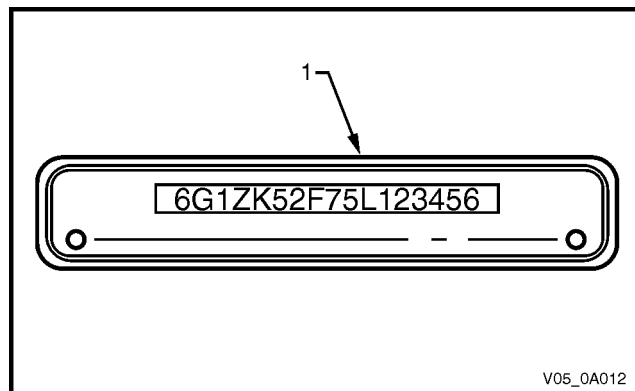


Figure 0A – 10

## VIN Body Stamping

The VIN is stamped into the front floor panel under the right-hand front seat. The VIN (1) is visible by lifting the carpet flap.

### NOTE

If the front floor panel assembly is to be replaced, the VIN will be lost. Contact your local Road Traffic Authority prior to replacing the panel to obtain the correct procedure for renumbering the vehicle.

### NOTE

A replacement body shell assembly is stamped during manufacture with a unique VIN that identifies it as a replacement part.

### NOTE

If an error is made to the VIN stamping during manufacture, it is lined out so that it remains legible and the correct number is stamped underneath.

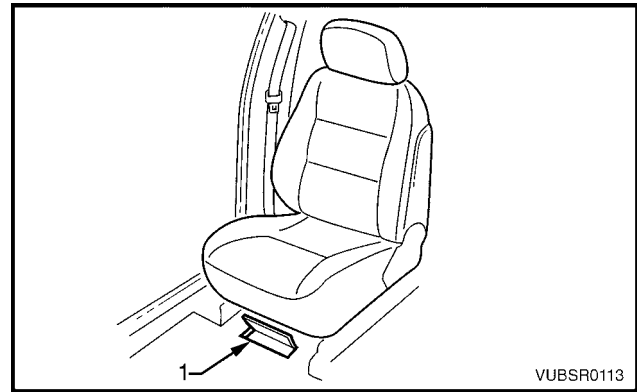


Figure 0A – 11

## 6.5 Vehicle Identification Numbering System

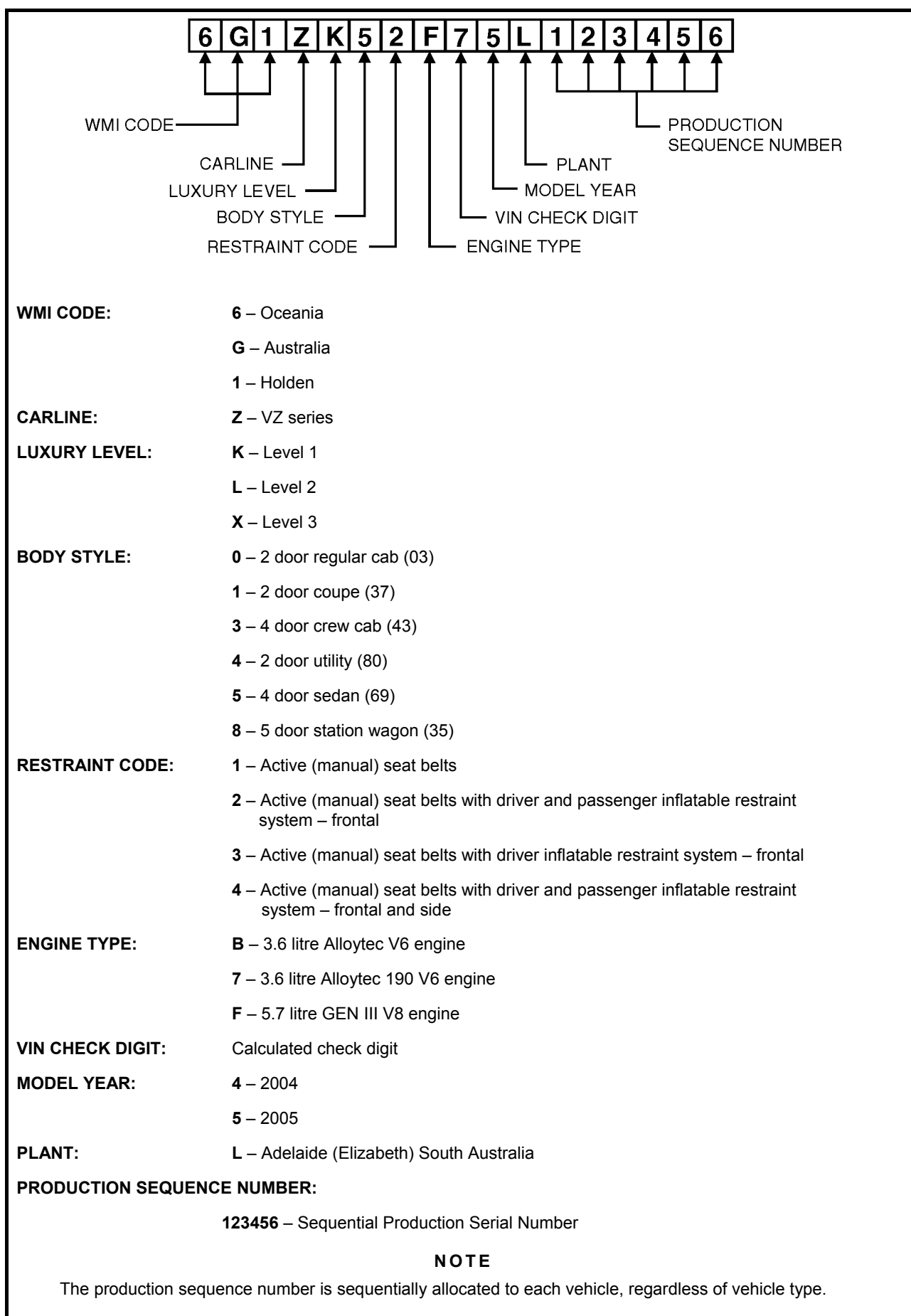


Figure 0A – 12

## 7 Major Component Serial Numbers

### 7.1 Engine Serial Number

#### Alloytec V6

The Alloytec V6 engine serial number (1) is located at the rear of the engine cylinder block on the left-hand side, above the starter motor.

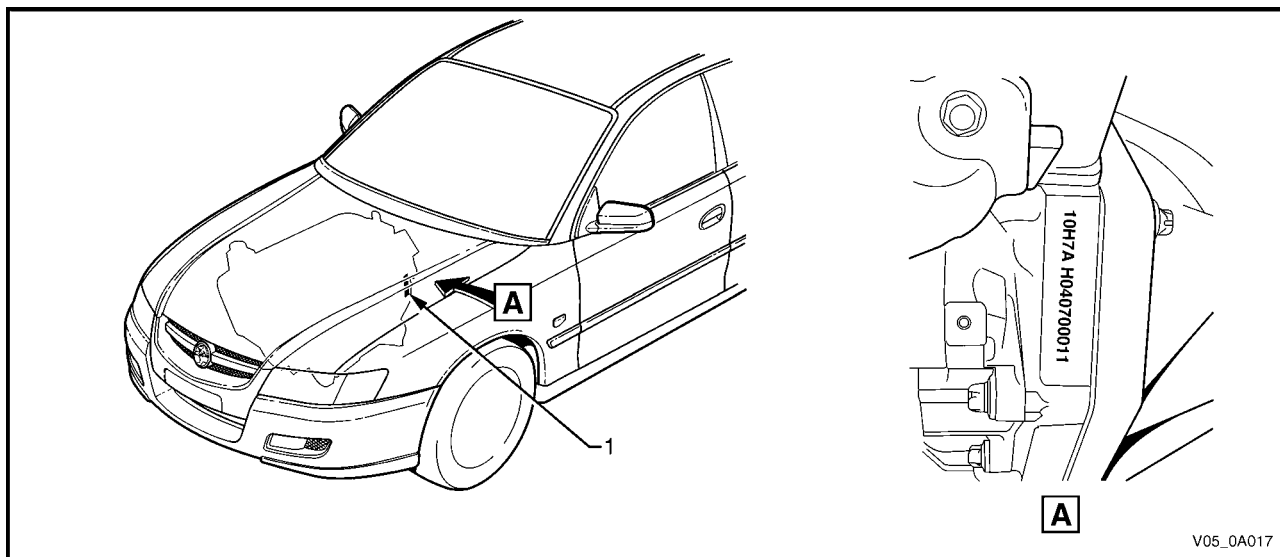


Figure 0A – 13

The following is a breakdown of the engine numbering system using 10H7A H040700011 as an example:

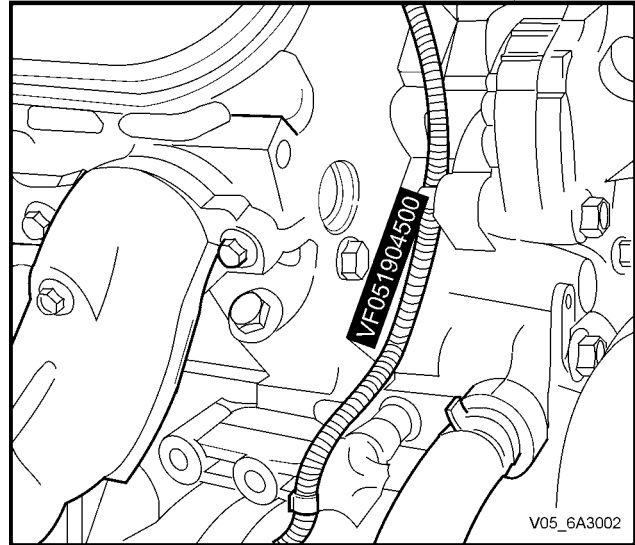
Engine No. Example	Code Explanation
10	Component ID ('10' = Assembly)
H7A	Engine Broadcast Code ('H7A' = Alloytec 190 V6 automatic)
Space	Space
H	Plant Code ('H' = Holden)
04	Build Year ('04' = 2004)
070	Julian Date ('070' = built on day 70)
0011	Four Digit Build Sequence Number

**GEN III V8**

The GEN III V8 engine serial number is located on the right-hand side at the front of the engine cylinder block and is prefixed by the letters VF.

The following is a breakdown of the engine numbering system using VF051904500 as an example:

Engine No. Example	Code Explanation
VF	Engine: GEN III V8
05	Build Year ('05' = 2005)
190	Julian Date ('190' = built on day 190)
4500	Four Digit Build Sequence Number



**Figure 0A – 14**